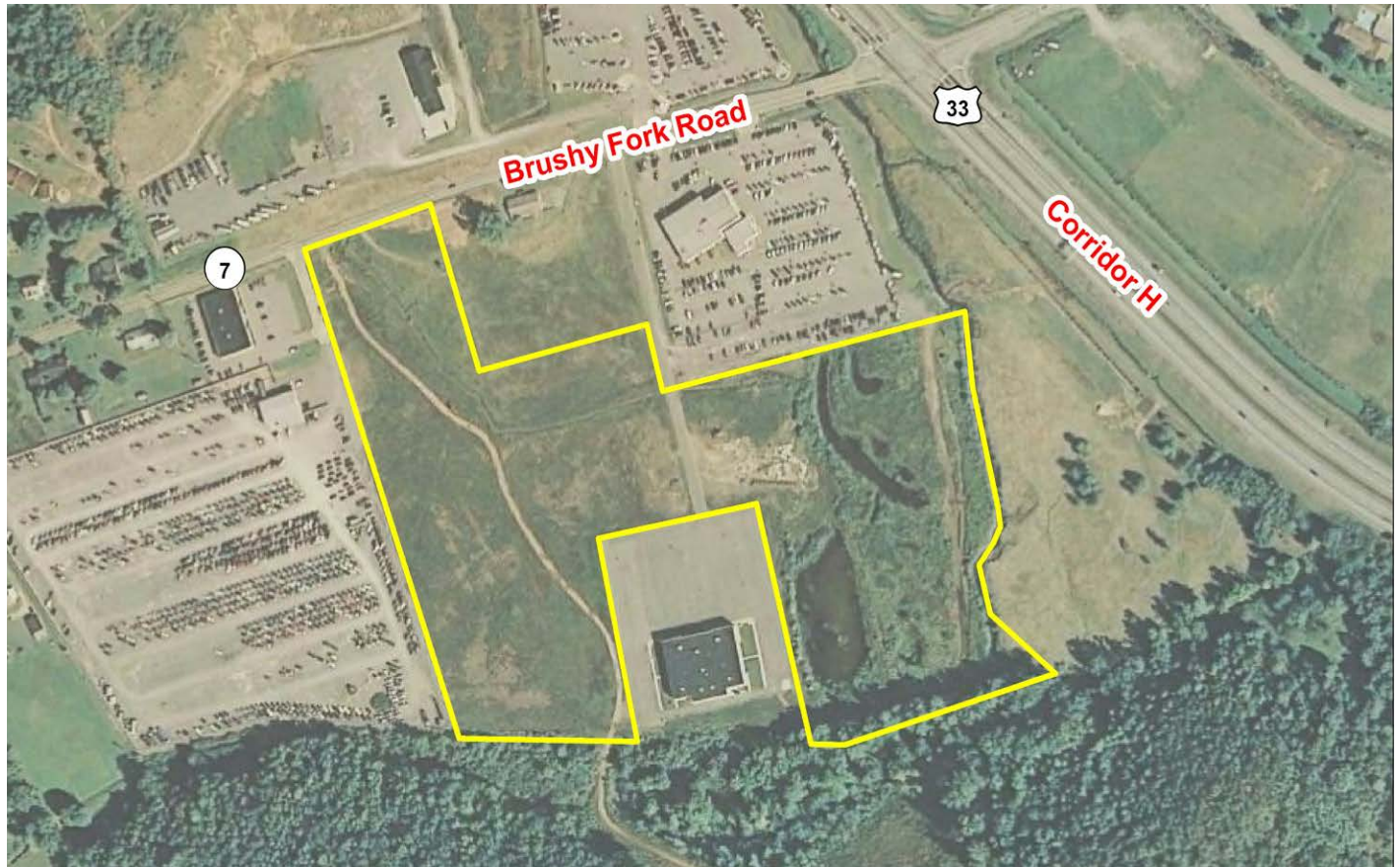




WEST VIRGINIA DEVELOPMENT OFFICE
 1900 Kanawha Boulevard East
 Charleston, WV 25305-0311
 Toll free: (800) 982-3386
 Office: (304) 558-2234 • WVDO.org

AVAILABLE PROPERTY DELTA WEST LLC - INTERSECTION OF ROUTE 33 & BRUSHY FORK ROAD SITE



BUCKHANNON, WEST VIRGINIA

LOCATION

Located in City Limits - No
 Zoning - None
 County - Upshur
 Flood Hazard Zone - Partially located in Zone AE

SIZE

Total Acreage - 22
 Will Owner Subdivide the Property - Yes
 Acreage Range That Owner Will Subdivide - 5 acres

TRANSPORTATION

Interstate/4 Lane Highway - 0.20 mile to US Route 33 (Corridor H) and 11 miles to I-79 Interchange Exit 99
 Commercial Airport - 30 miles to North Central West Virginia Airport
 Railroad - None
 Railroad Siding - None
 Navigable River - None
 On-Site Barge Facility - None

UTILITIES

Electricity - Mon Power
 Proximity to Power Line - On site
 Voltage -
 Phase - 3

Gas - Mountaineer Gas Company
 Proximity to Gas Main -
 Size of Gas Main -
 Gas Pressure -

Water - City of Buckhannon

Proximity to Water Main - Along road adjacent to property
 Size of Water Main -
 Water Pressure (Static) -
 Water Pressure (Residual) -
 Excess Capacity of Treatment Plant -

Sewer - City of Buckhannon
 Proximity to Sewer Main - On site
 Size of Sewer Main - 8"
 Excess Capacity of Treatment Plant -

Telephone - Frontier
 Switching -
 Broadband Service -

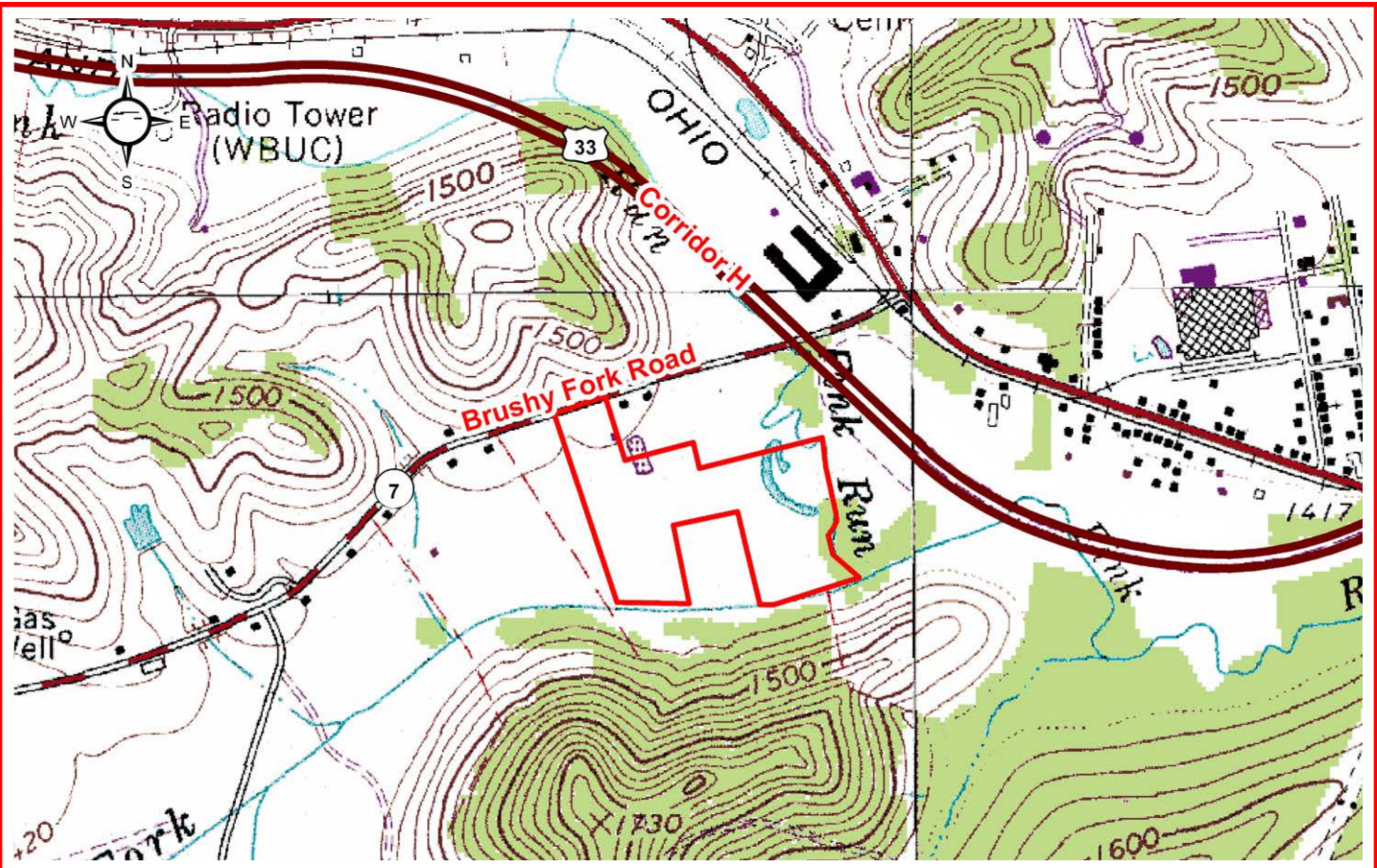
SALE/LEASE

Sale Price - Negotiable
 Lease Price - Negotiable
 Available Purchase or Lease Date - Immediately

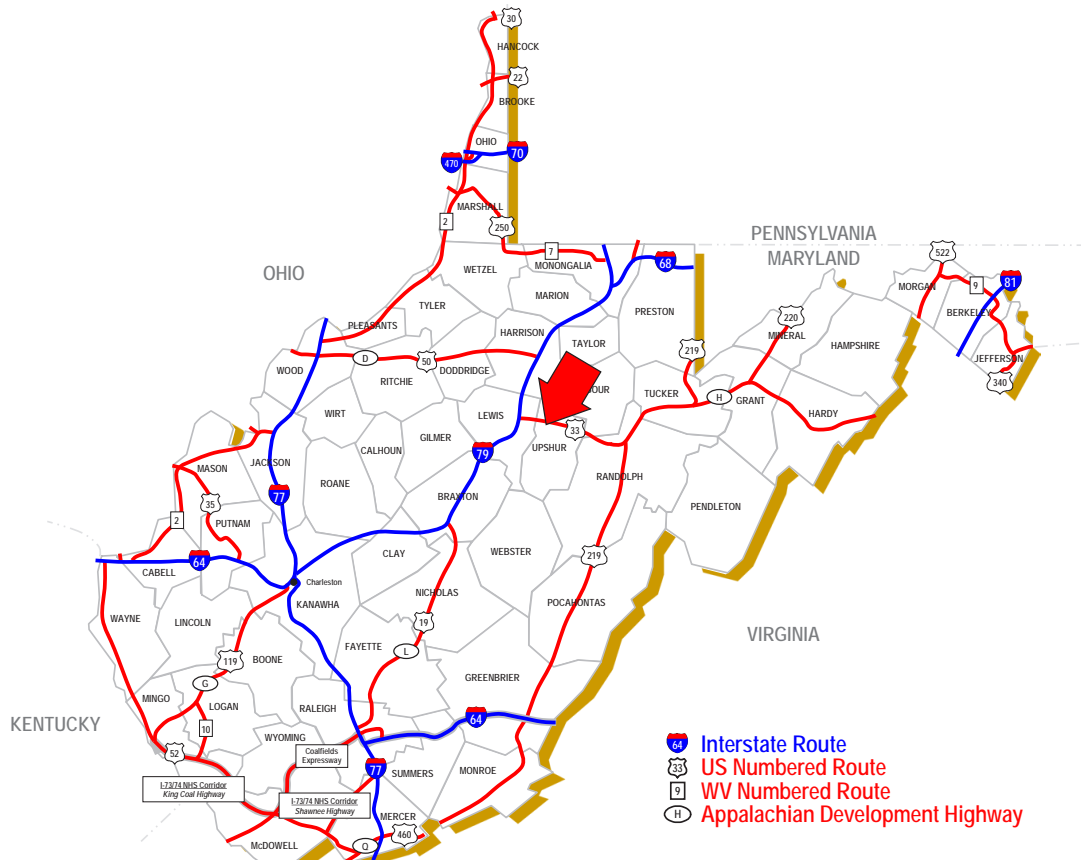
FOR FURTHER INFORMATION CONTACT

Stephen E. Foster, Executive Director
 Upshur County Development Authority
 99 Edmiston Way, Suite 102
 Buckhannon, WV 26201
 Phone: (304) 472-1757
 Fax: (304) 472-4998
 Email: info@upshurda.com
 Website: www.upshurda.com

Disclaimer: The information contained herein is from multiple sources and is provided as a convenient guide. It is deemed reliable, but is not guaranteed, and is subject to change without notice. It is your responsibility to independently confirm its accuracy and completeness.



SCALE: 1" = 1000'



BUCKHANNON, WEST VIRGINIA