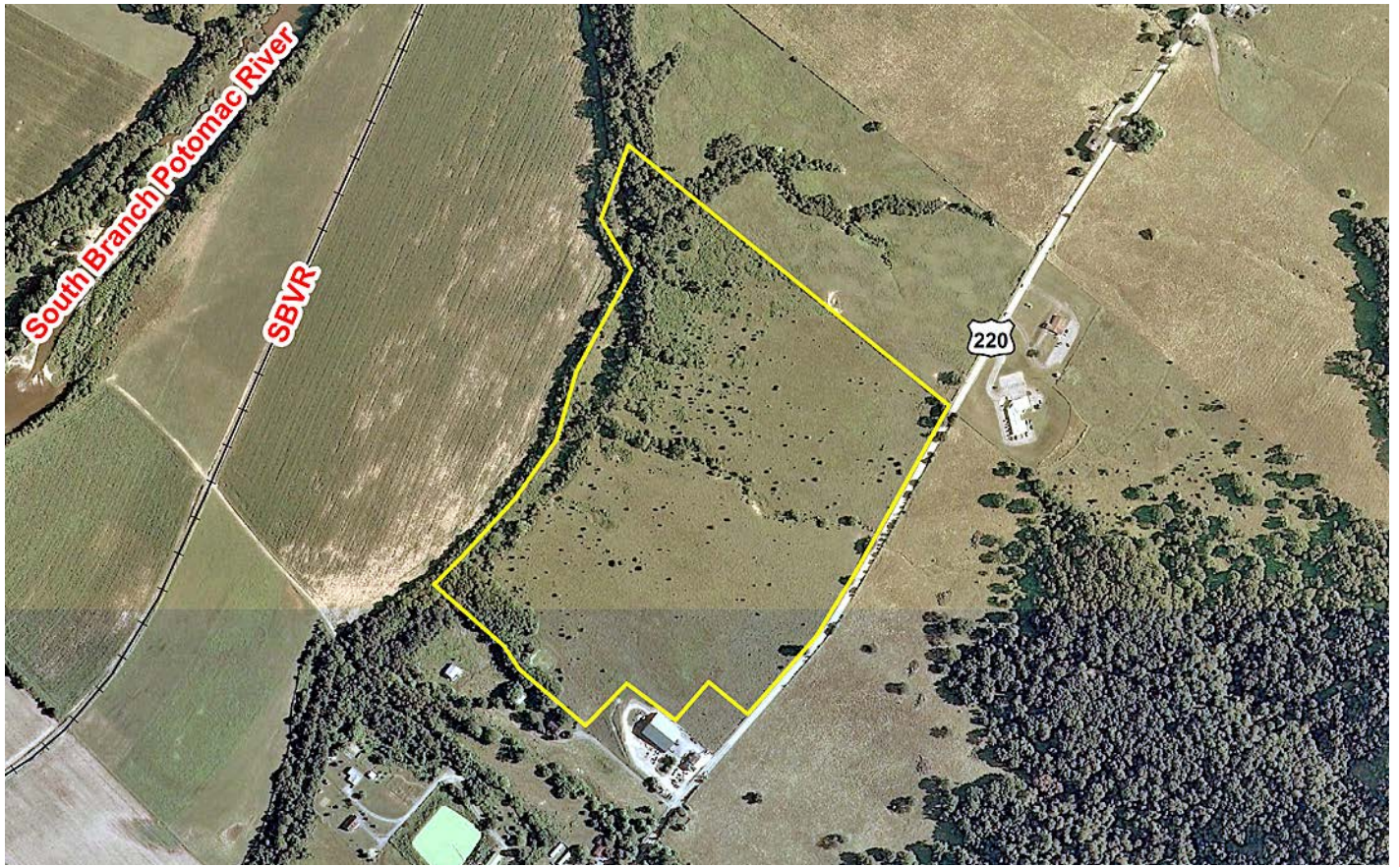




WEST VIRGINIA DEVELOPMENT OFFICE
 1900 Kanawha Boulevard East
 Charleston, WV 25305-0311
 Toll free: (800) 982-3386
 Office: (304) 558-2234 - WVDO.org

AVAILABLE PROPERTY FISHER BUSINESS SITE



MOOREFIELD, WEST VIRGINIA

LOCATION

Located in City Limits - No
 Zoning - Agricultural and Residential
 County - Hardy
 Flood Hazard Zone - Location is NOT WITHIN any identified flood hazard area

SIZE

Total Acreage - 55.35
 Will Owner Subdivide the Property - Yes
 Acreage Range That Owner Will Subdivide - Negotiable

TRANSPORTATION

Interstate/4 Lane Highway - 7 miles to Corridor H
 Commercial Airport - 57 miles to Winchester, VA Regional Airport
 Railroad - South Branch Valley Railroad
 Railroad Siding - None
 Navigable River - None
 On-Site Barge Facility - None

UTILITIES

Electricity - Potomac Edison
 Proximity to Power Line - US Route 220 South
 Voltage -
 Phase -

Gas - None
 Proximity to Gas Main -
 Size of Gas Main -
 Gas Pressure -

Water - Hardy County Public Service District
 Proximity to Water Main - US Route 220 South

Size of Water Main - 6"
 Water Pressure (Static) -
 Water Pressure (Residual) -
 Excess Capacity of Treatment Plant -

Sewer - None
 Proximity to Sewer Main -
 Size of Sewer Main -
 Excess Capacity of Treatment Plant -

Telephone - Frontier
 Switching - Yes
 Broadband Service - Yes

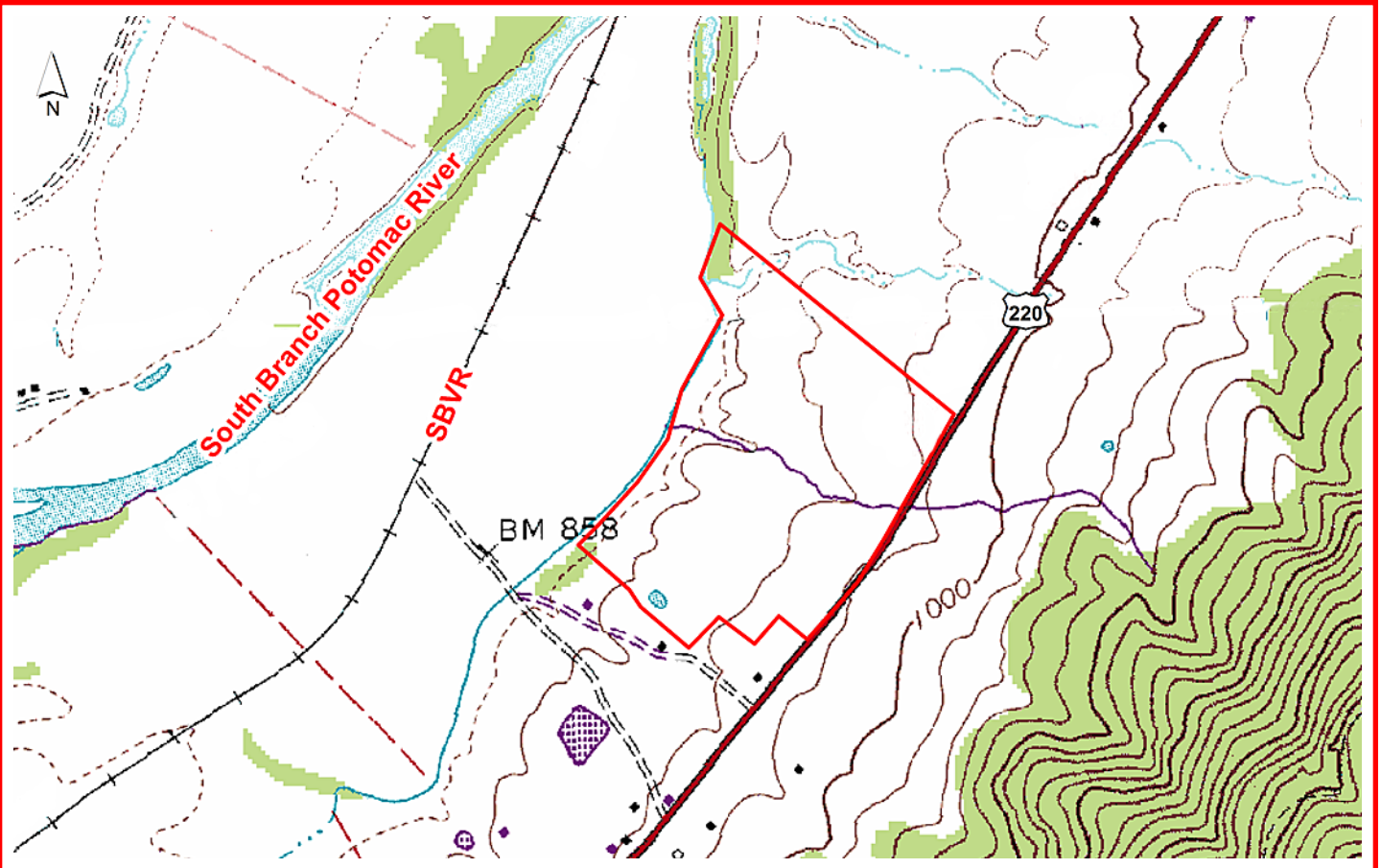
SALE/LEASE

Sale Price - Negotiable
 Lease Price - Negotiable
 Available Purchase or Lease Date - Immediately

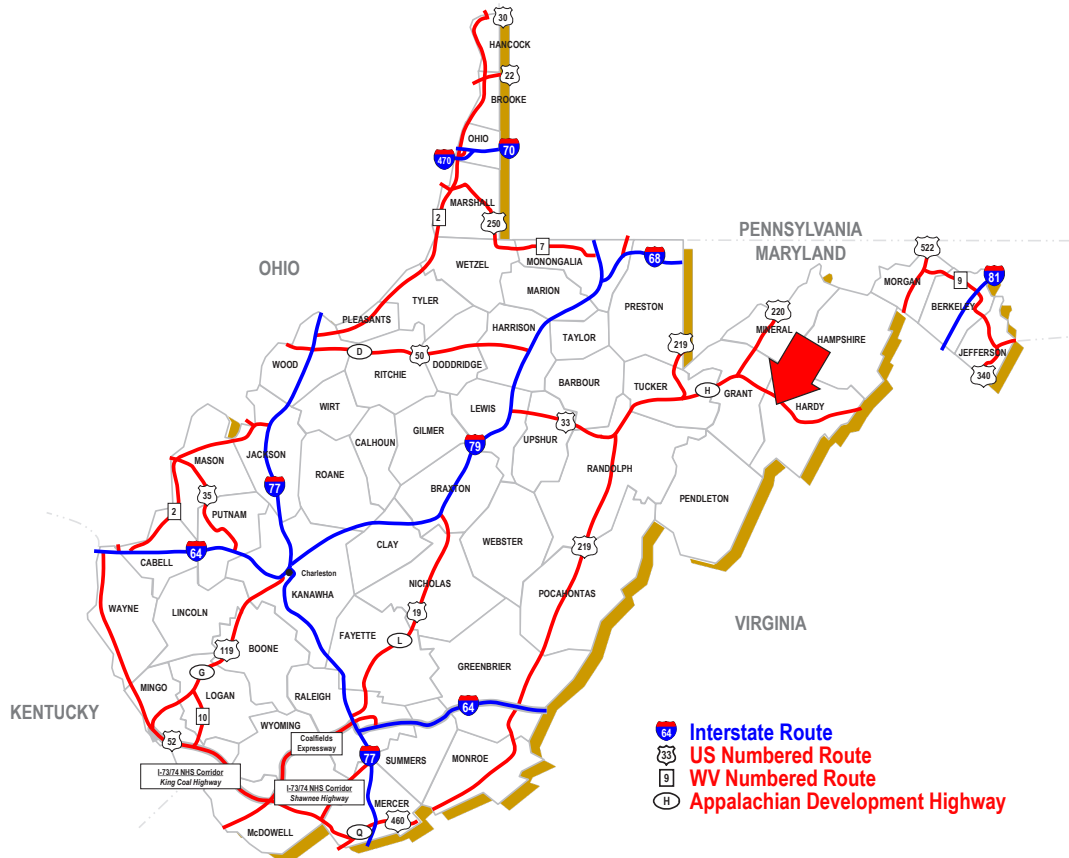
FOR FURTHER INFORMATION CONTACT

Mallie J. Combs, Executive Director
 Hardy County Rural Development Authority
 223 North Main Street, Suite 102
 PO Box 209
 Moorefield, WV 26836
 Phone: (304) 530-3047
 Fax: (304) 530-6995
 Email: hardyrda@hardynet.com
 Website: www.hardycountywv.com

Disclaimer: The information contained herein is from multiple sources and is provided as a convenient guide. It is deemed reliable, but is not guaranteed, and is subject to change without notice. It is your responsibility to independently confirm its accuracy and completeness.



SCALE: 1" = 1000'



MOOREFIELD, WEST VIRGINIA