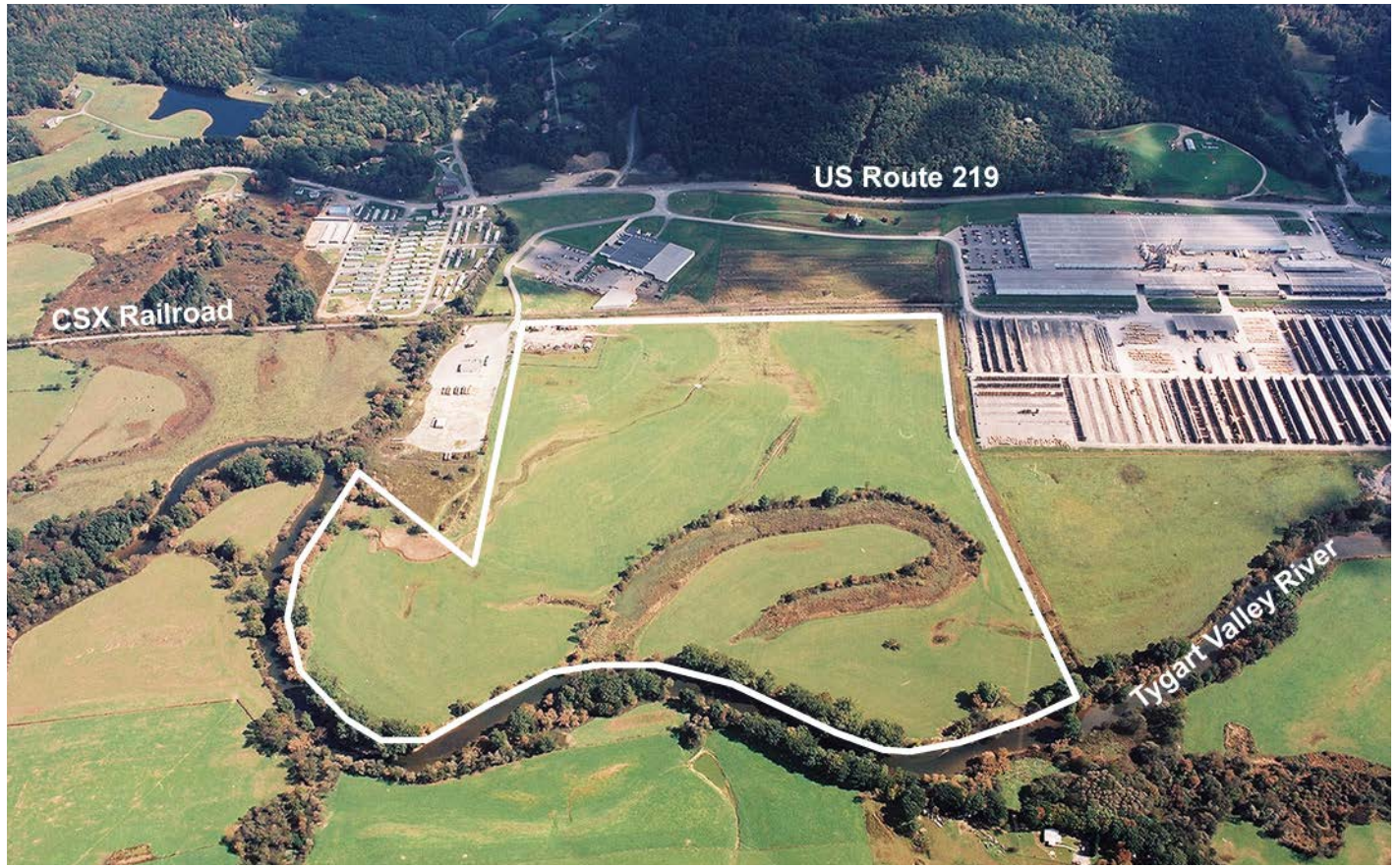




WEST VIRGINIA DEVELOPMENT OFFICE  
 1900 Kanawha Boulevard East  
 Charleston, WV 25305-0311  
 Toll free: (800) 982-3386  
 Office: (304) 558-2234 • WVDO.org

## AVAILABLE PROPERTY LAUREL LANDS SITE



### BEVERLY, WEST VIRGINIA

#### LOCATION

Located in City Limits - No  
 Zoning - None  
 County - Randolph  
 Flood Hazard Zone - Partially located in Zone AE

#### SIZE

Total Acreage - 100.44  
 Will Owner Subdivide the Property -  
 Acreage Range That Owner Will Subdivide -

#### TRANSPORTATION

Interstate/4 Lane Highway - 10 miles to US Route 33 (Corridor H)  
 Commercial Airport - 72 miles to North Central West Virginia Airport  
 Railroad - CSX  
 Railroad Siding - None  
 Navigable River - None  
 On-Site Barge Facility - None

#### UTILITIES

Electricity - Mon Power  
 Proximity to Power Line -  
 Voltage -  
 Phase -  
 Gas - Mountaineer Gas Company  
 Proximity to Gas Main -  
 Size of Gas Main -  
 Gas Pressure -

Water - Town of Beverly  
 Proximity to Water Main -  
 Size of Gas Main -

Water Pressure (Static) -  
 Water Pressure (Residual) -  
 Excess Capacity of Treatment Plant -

Sewer - None  
 Proximity to Sewer Main -  
 Size of Sewer Main -  
 Excess Capacity of Treatment Plant -

Telephone - Frontier  
 Switching -  
 Broadband Service -

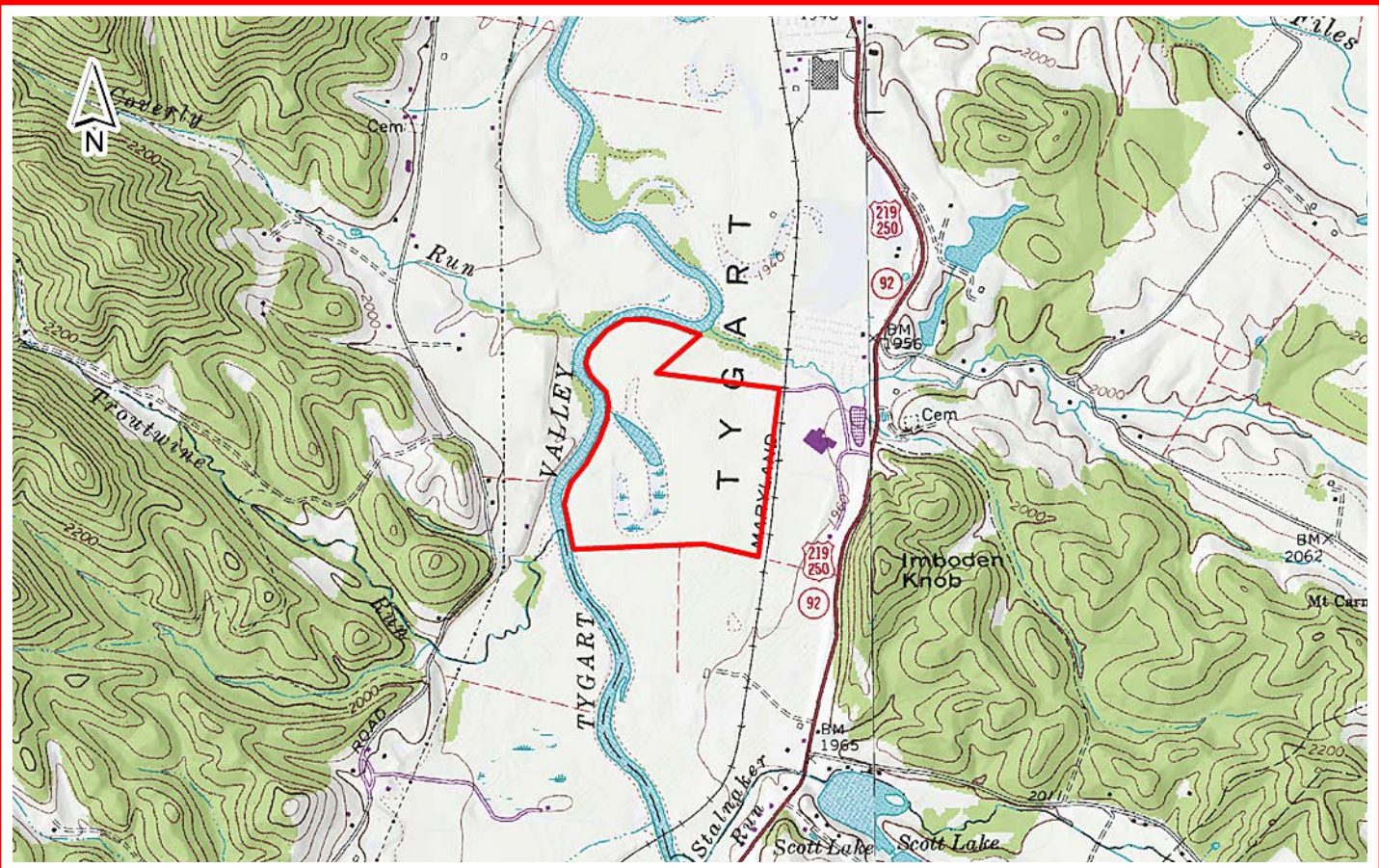
#### SALE/LEASE

Sale Price - \$20,000 per acre, negotiable  
 Sale Terms - Negotiable  
 Lease Price - For sale only  
 Lease Terms - For sale only  
 Available Purchase or Lease Date - Immediately

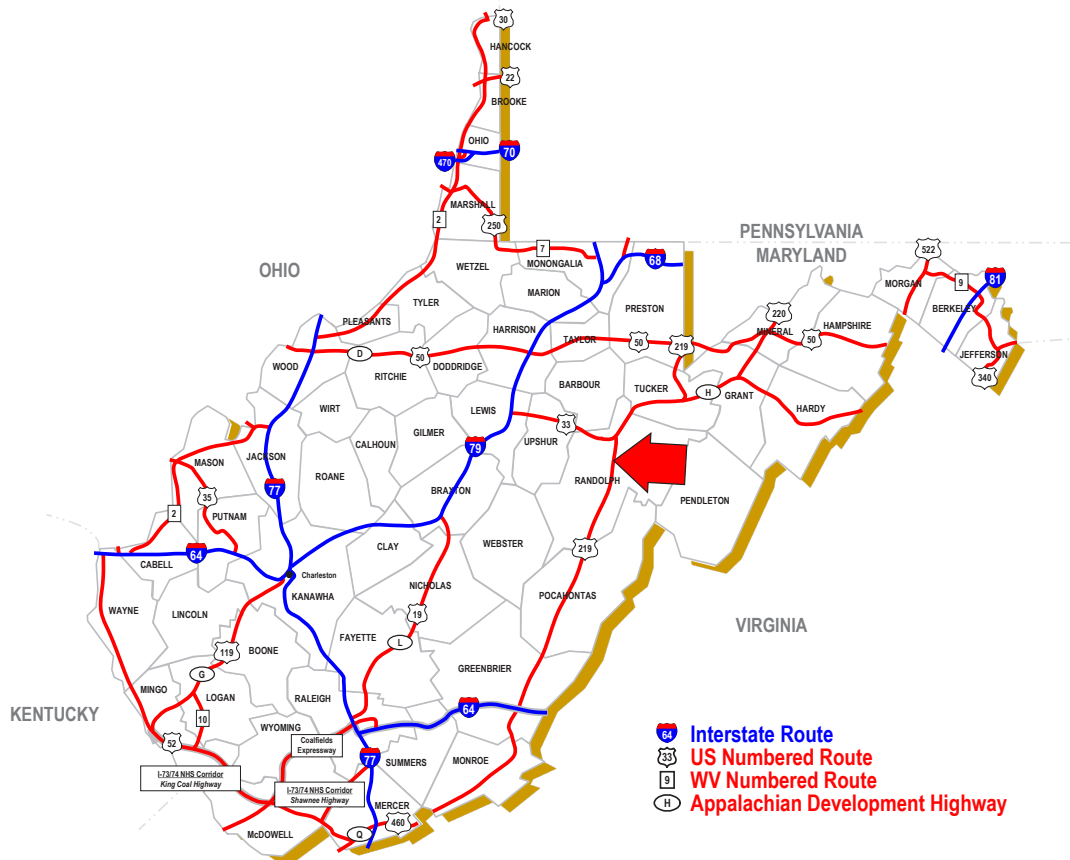
#### FOR FURTHER INFORMATION CONTACT

Robert L. Morris, Jr., Executive Director  
 Randolph County Development Authority  
 WV Wood Technology Center  
 10 Eleventh Street  
 Elkins, WV 26241  
 Phone: (304) 637-0803  
 Mobile: (304) 940-1246  
 Fax: (304) 637-4902  
 Email: robbie@rcdawv.org

**Disclaimer:** The information contained herein is from multiple sources and is provided as a convenient guide. It is deemed reliable, but is not guaranteed, and is subject to change without notice. It is your responsibility to independently confirm its accuracy and completeness.



SCALE: 1" = 2000'



BEVERLY, WEST VIRGINIA