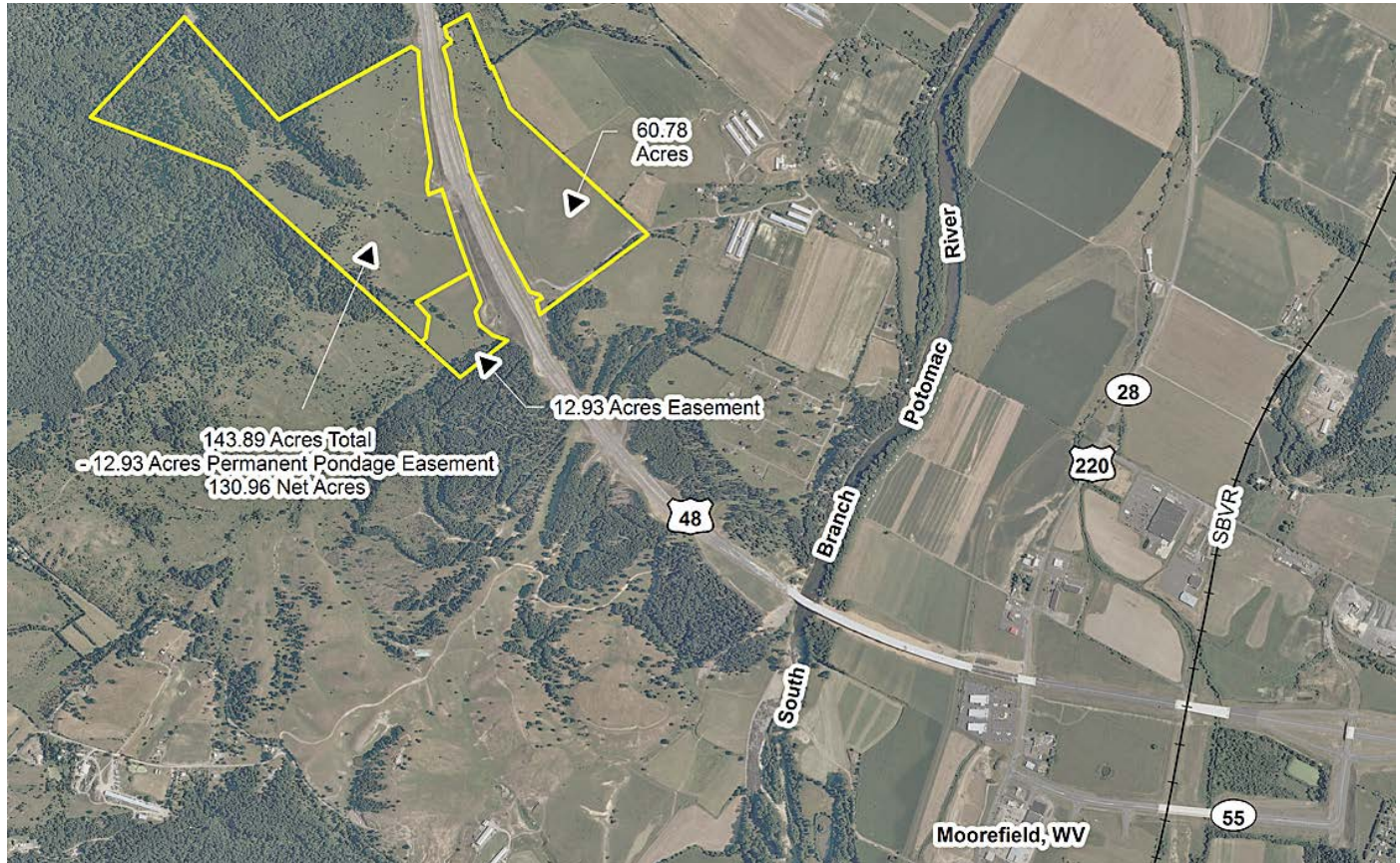




WEST VIRGINIA DEVELOPMENT OFFICE
1900 Kanawha Boulevard East
Charleston, WV 25305-0311
Toll free: (800) 982-3386
Office: (304) 558-2234 • WVDO.org

AVAILABLE PROPERTY CRITES SITE



MOOREFIELD, WEST VIRGINIA

LOCATION

Located in City Limits - No
Zoning -
County - Hardy
Flood Hazard Zone - Partially located in Zone A (5.19 Acres in the 60.78 Acre Tract)

SIZE

Total Acreage - 191.74 (Tract A 60.78 and Tract B 130.96 Acres)
Will Owner Subdivide the Property -
Acreage Range That Owner Will Subdivide -

TRANSPORTATION

Interstate/4 Lane Highway - Located adjacent to US Route 48 (Corridor L)
Commercial Airport - 64.7 miles to Winchester, VA Regional Airport
Railroad - None
Railroad Siding - No
Navigable River - None
On-Site Barge Facility - No

UTILITIES

Electricity - Potomac Edison
Proximity to Power Line -
Voltage -
Phase -

Gas -
Proximity to Gas Main -
Size of Gas Main -
Gas Pressure -

Water -

Proximity to Water Main -
Size of Water Main -
Water Pressure (Static) -
Water Pressure (Residual) -
Excess Capacity of Treatment Plant -

Sewer -
Proximity to Sewer Main -
Size of Sewer Main -
Excess Capacity of Treatment Plant -

Telephone - Frontier
Broadband Service -

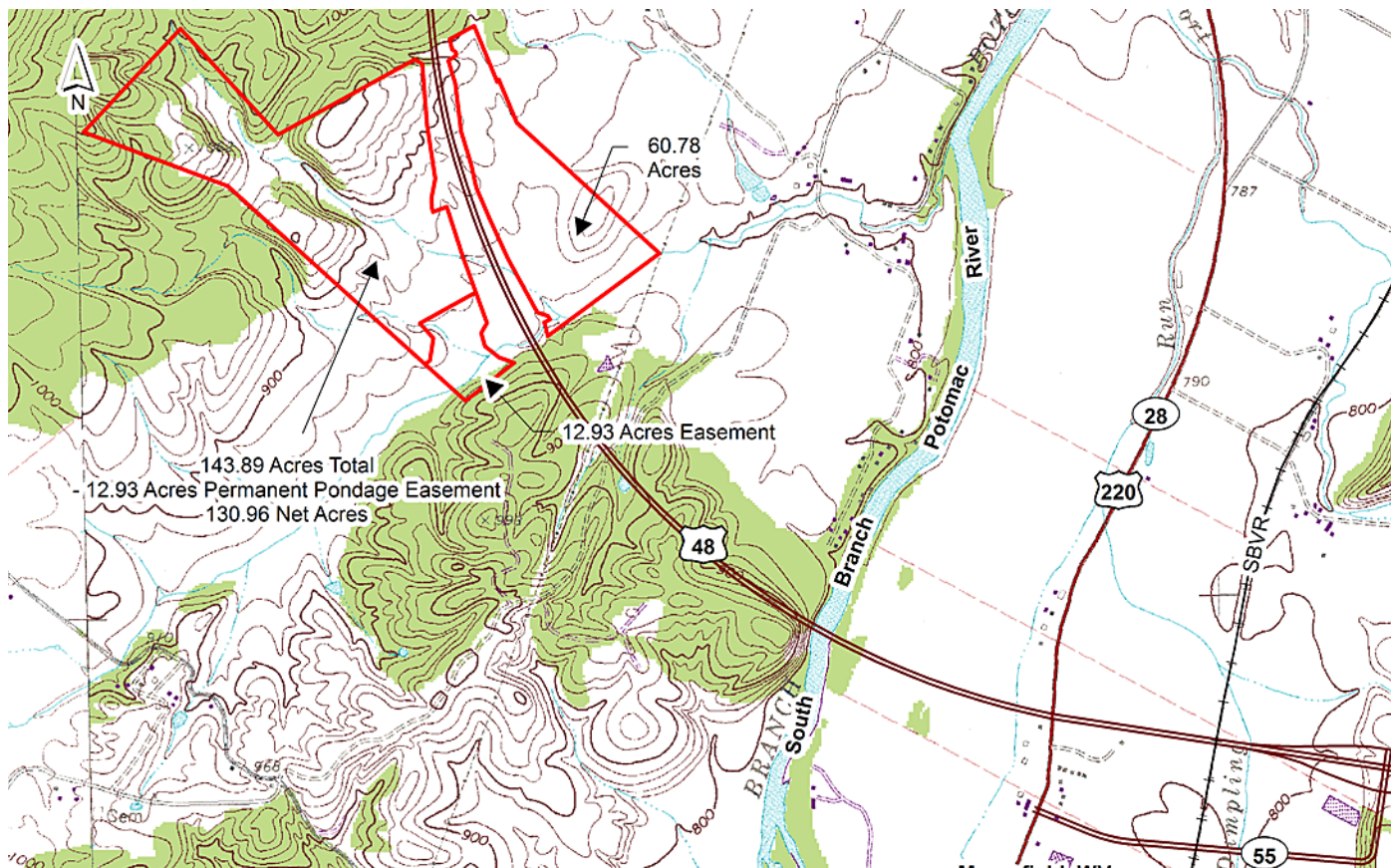
SALE/LEASE

Sale Price -
Lease Price -
Available Purchase or Lease Date -

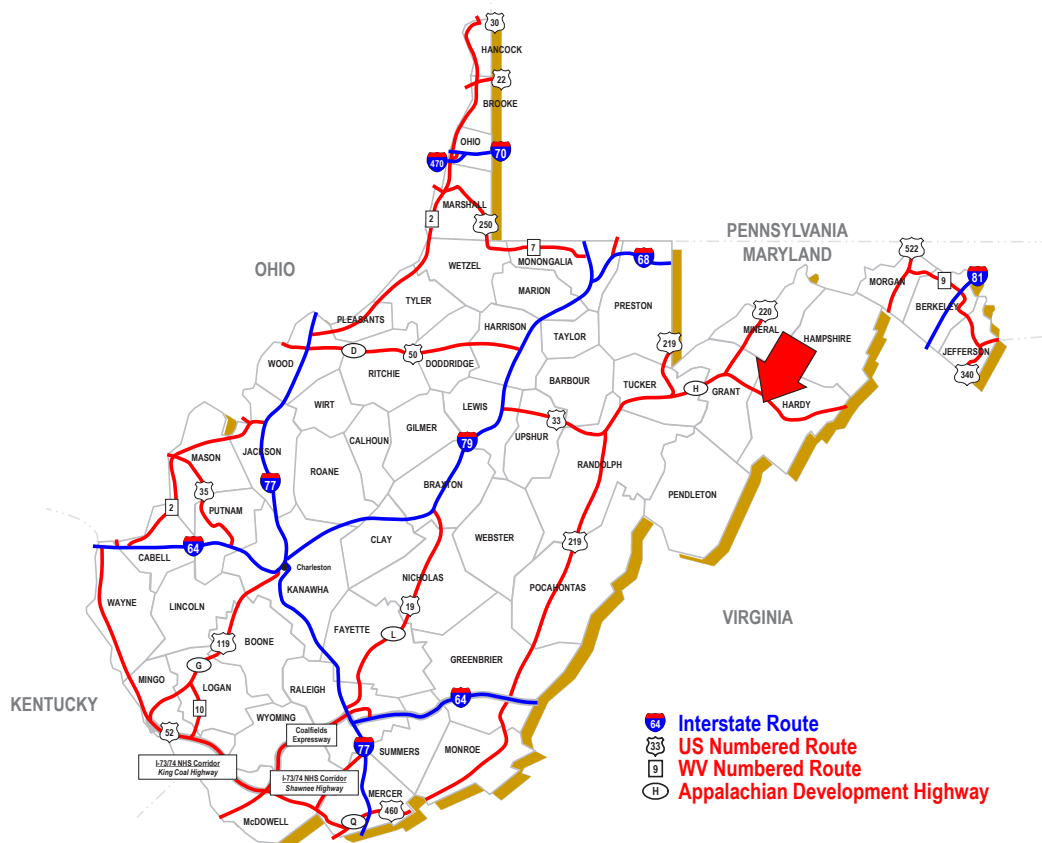
FOR FURTHER INFORMATION CONTACT

Mallie J. Combs, Executive Director
Hardy County Rural Development Authority
223 North Main Street, Suite 102
PO Box 209
Moorefield, WV 26836
Phone: (304) 530-3047
Fax: (304) 530-6995
Email: hardydrda@hardynet.com
Website: www.hardycountywv.com

Disclaimer: The information contained herein is from multiple sources and is provided as a convenient guide. It is deemed reliable, but is not guaranteed, and is subject to change without notice. It is your responsibility to independently confirm its accuracy and completeness.



SCALE: 1" = 2000'



MOOREFIELD, WEST VIRGINIA