



WEST VIRGINIA DEVELOPMENT OFFICE
1900 Kanawha Boulevard East
Charleston, WV 25305-0311
Toll free: (800) 982-3386
Office: (304) 558-2234 • WVDO.org

AVAILABLE PROPERTY CSX YARD SITE



ELKINS, WEST VIRGINIA

LOCATION

Located in City Limits - Yes
Zoning - Industrial
County - Randolph
Flood Hazard Zone - Location is NOT WITHIN any identified flood hazard area

SIZE

Total Acreage - 10
Will Owner Subdivide the Property -
Acreage Range That Owner Will Subdivide -

TRANSPORTATION

Interstate/4 Lane Highway - 3 miles to US Route 33 (Corridor H)
Commercial Airport - 65 miles to North Central West Virginia Airport
Railroad - CSX
Railroad Siding - Yes
Navigable River - None
On-Site Barge Facility - None

UTILITIES

Electricity - Mon Power
Proximity to Power Line -
Voltage -
Phase -

Gas - Mountaineer Gas Company
Proximity to Gas Main -
Size of Gas Main -
Gas Pressure -

Water - City of Elkins

Proximity to Water Main -
Size of Water Main -
Water Pressure (Static) -
Water Pressure (Residual) -
Excess Capacity of Treatment Plant -

Sewer - City of Elkins
Proximity to Sewer Main -
Size of Sewer Main -
Excess Capacity of Treatment Plant -

Telephone - Frontier
Broadband Service - Yes

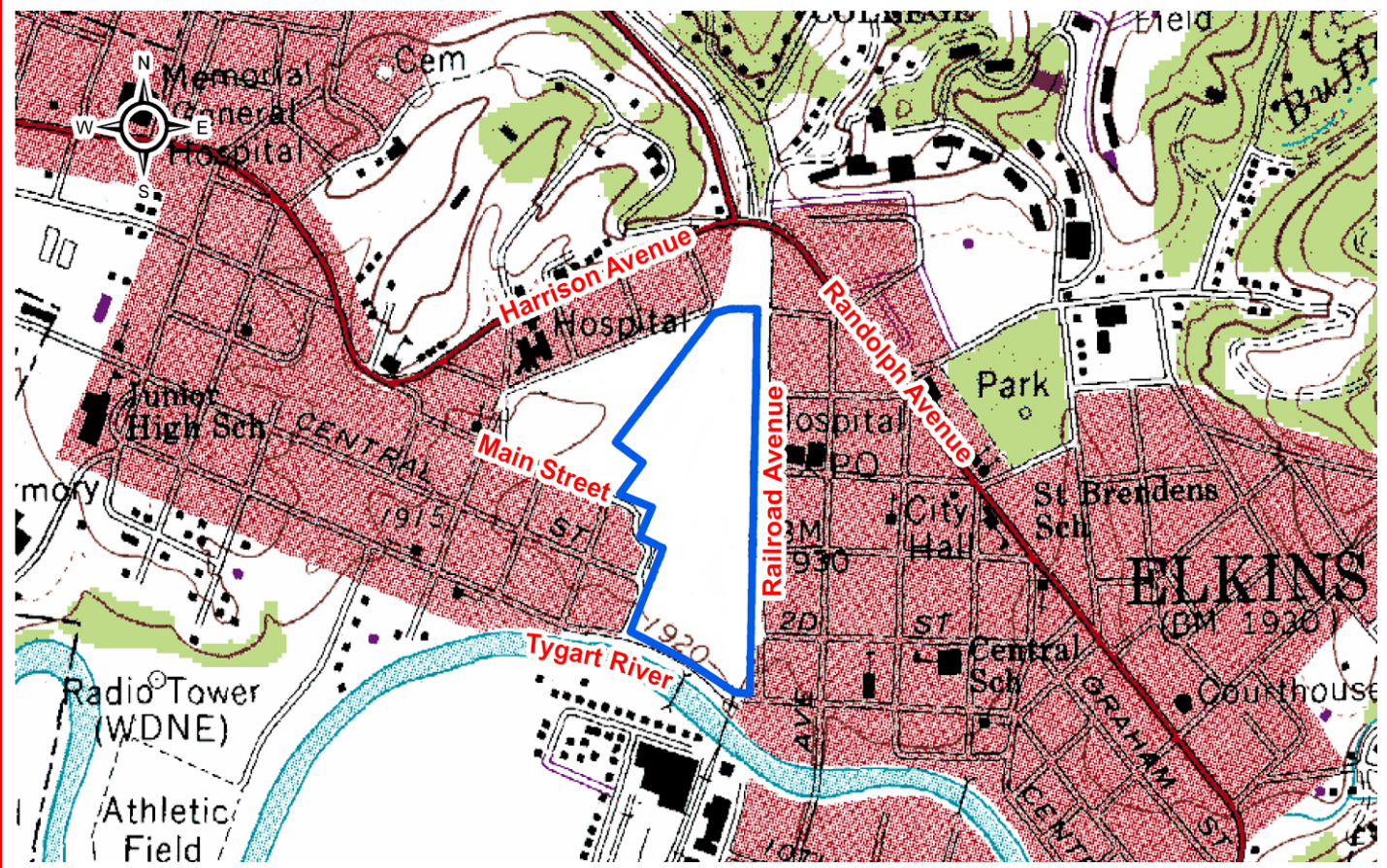
SALE/LEASE

Sale Price -
Lease Price -
Available Purchase or Lease Date -

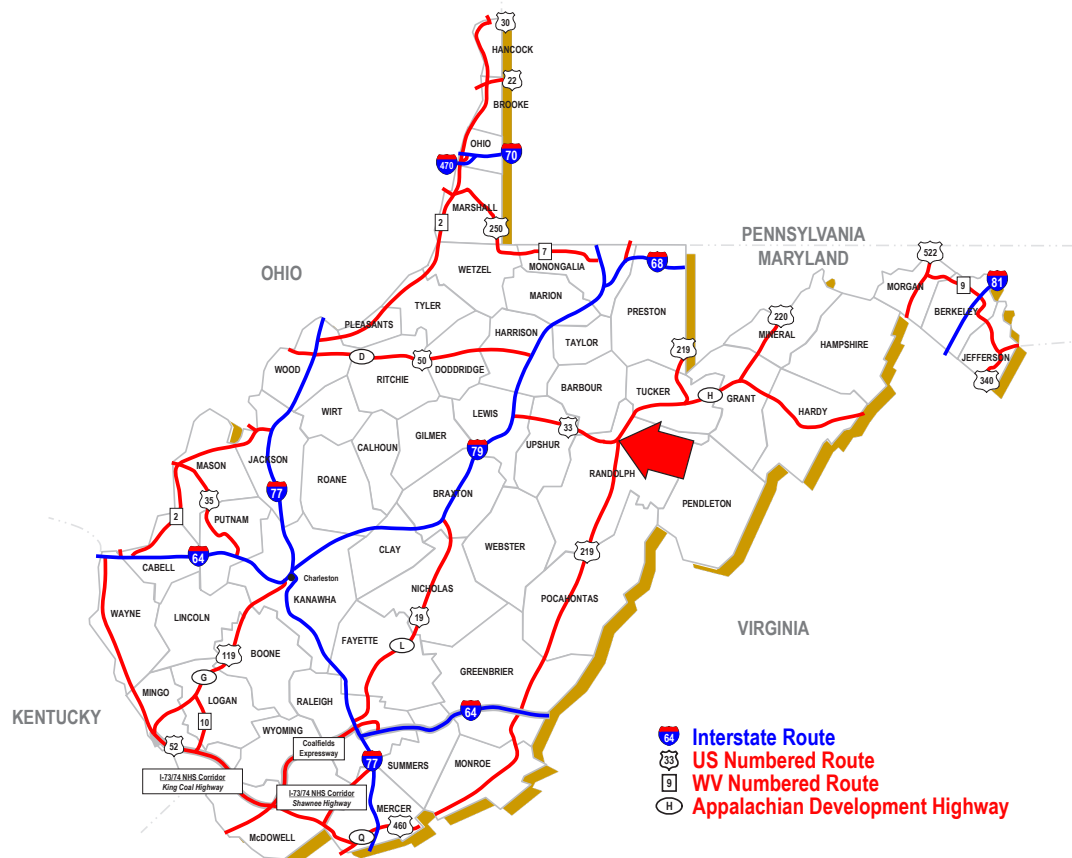
FOR FURTHER INFORMATION CONTACT

Robert L. Morris, Jr., Executive Director
Randolph County Development Authority
WV Wood Technology Center
10 Eleventh Street
Elkins, WV 26241
Phone: (304) 637-0803
Mobile: (304) 940-1246
Fax: (304) 637-4902

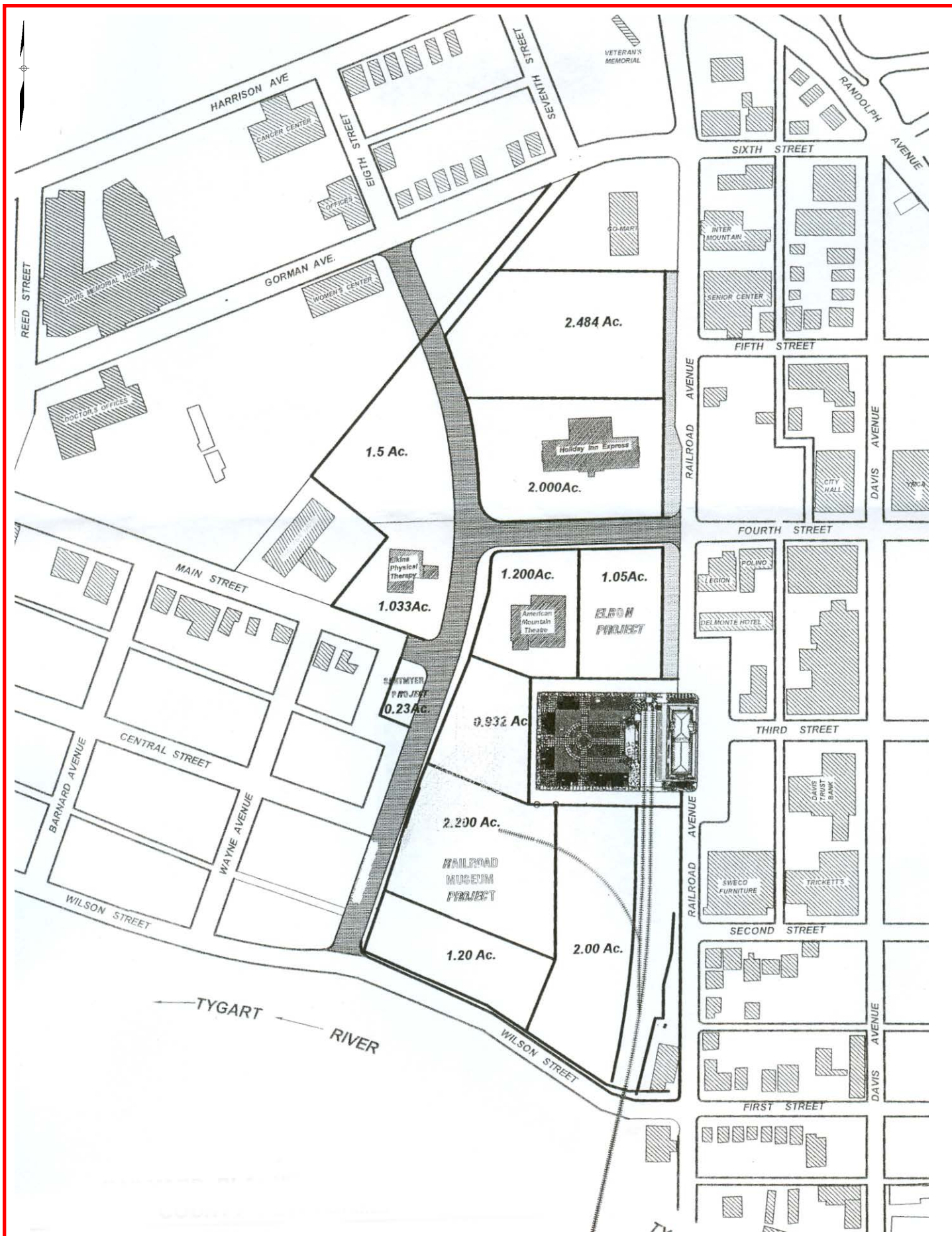
Disclaimer: The information contained herein is from multiple sources and is provided as a convenient guide. It is deemed reliable, but is not guaranteed, and is subject to change without notice. It is your responsibility to independently confirm its accuracy and completeness.



SCALE: 1" = 1000'



ELKINS, WEST VIRGINIA



LOT LAYOUT MAP (NOT TO SCALE)