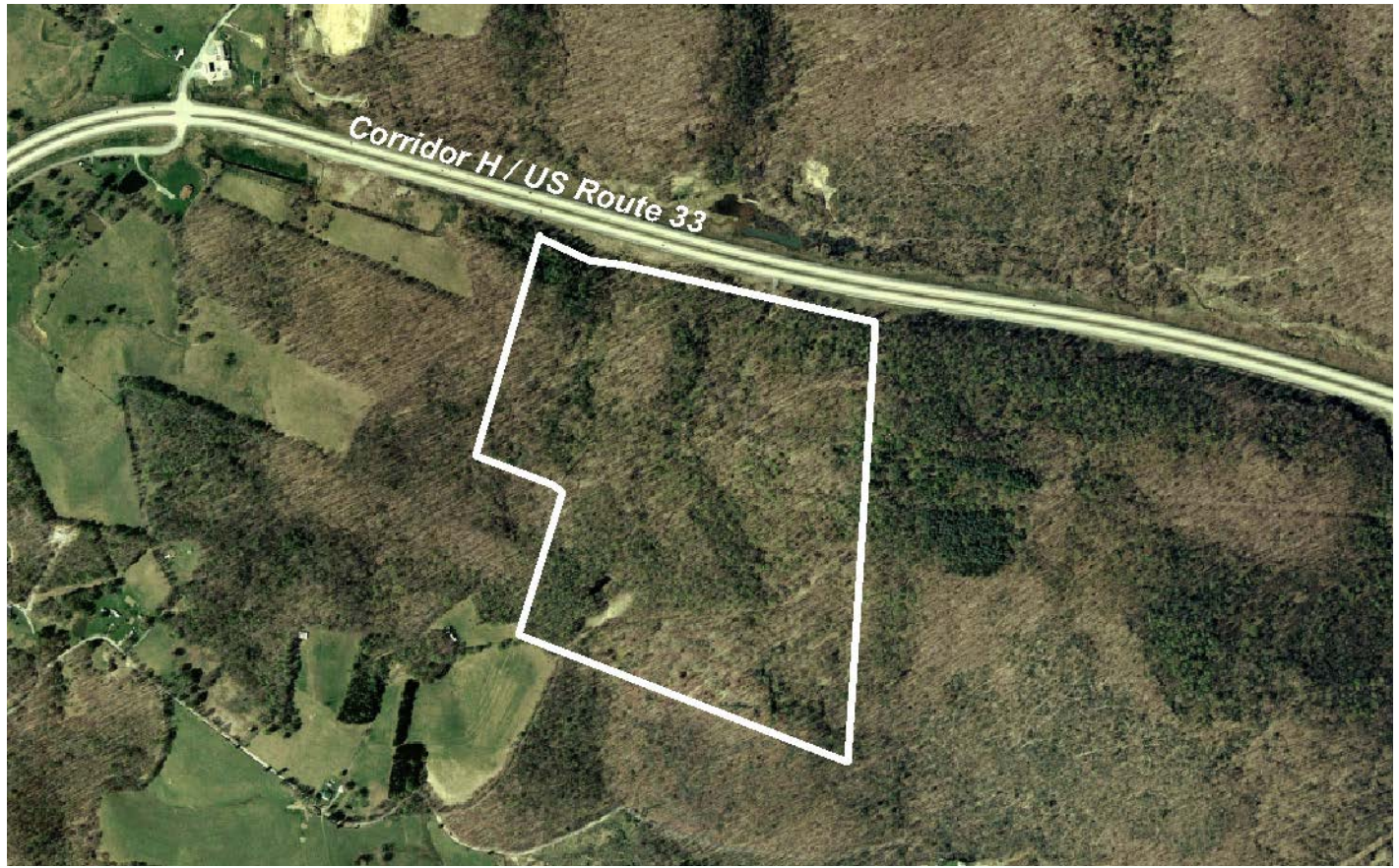




WEST VIRGINIA DEVELOPMENT OFFICE  
 1900 Kanawha Boulevard East  
 Charleston, WV 25305-0311  
 Toll free: (800) 982-3386  
 Office: (304) 558-2234 - WVDO.org

## AVAILABLE PROPERTY HD LAMBERT SITE



### BUCKHANNON, WEST VIRGINIA

#### LOCATION

Located in City Limits - No  
 Zoning - None  
 County - Upshur  
 Flood Hazard Zone - Location is NOT WITHIN any identified flood hazard area

#### SIZE

Total Acreage - 110  
 Will Owner Subdivide the Property - Yes  
 Acreage Range That Owner Will Subdivide - Negotiable

#### TRANSPORTATION

Interstate/4 Lane Highway - Located adjacent to US Route 33 (Corridor H)  
 Commercial Airport - 30 miles to North Central West Virginia Airport  
 Railroad - None  
 Railroad Siding - None  
 Navigable River - None  
 On-Site Barge Facility - None

#### UTILITIES

Electricity - Mon Power  
 Proximity to Power Line -  
 Voltage -  
 Phase -

Gas - Mountaineer Gas  
 Proximity to Gas Main -  
 Size of Gas Main -  
 Gas Pressure -

Water - City of Buckhannon  
 Proximity to Water Main -

Size of Water Main -  
 Water Pressure (Static) -  
 Water Pressure (Residual) -  
 Excess Capacity of Treatment Plant -

Sewer - None  
 Proximity to Sewer Main -  
 Size of Sewer Main -  
 Excess Capacity of Treatment Plant -

Telephone - None  
 Switching -  
 Broadband Service -

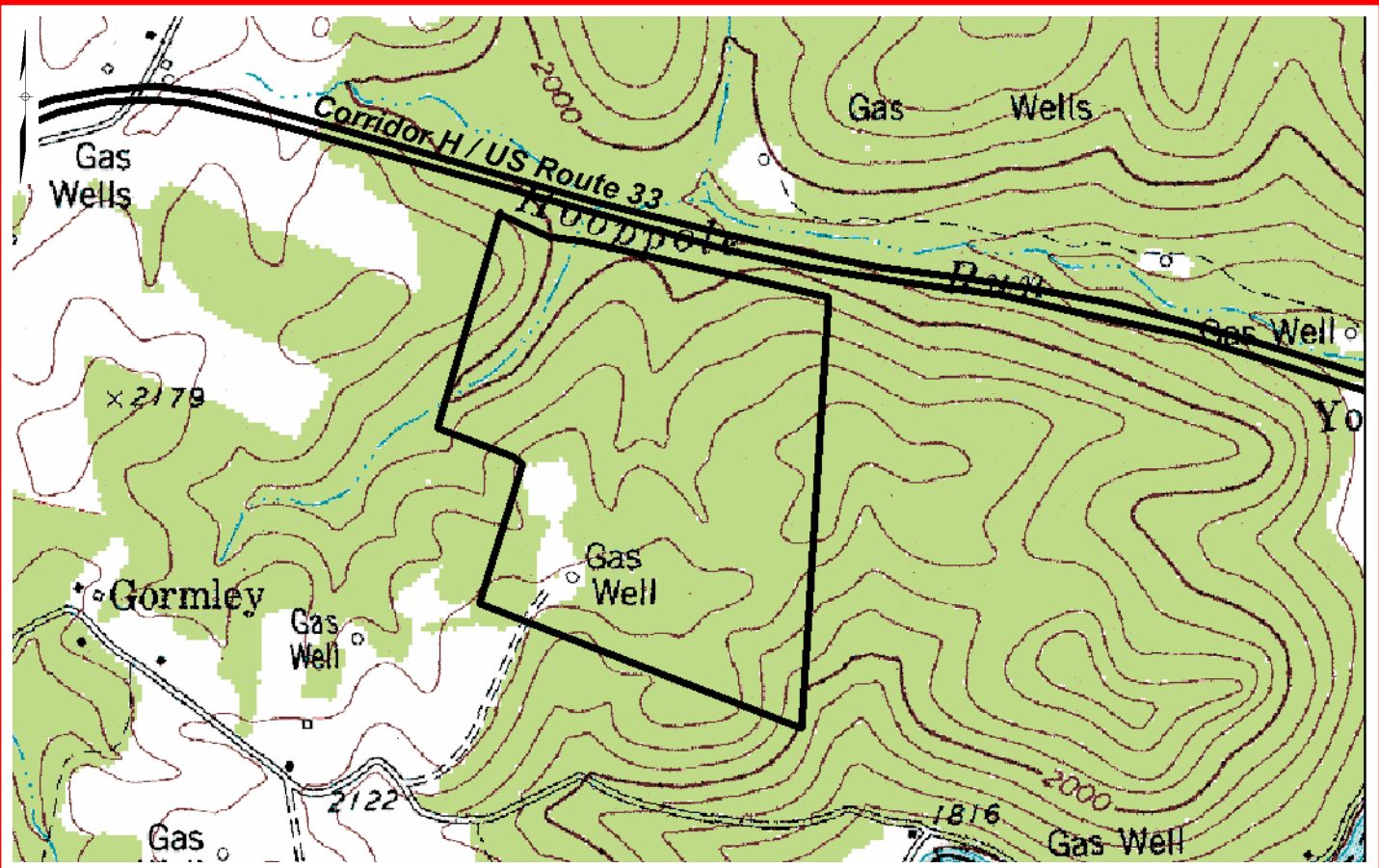
#### SALE/LEASE

Sale Price - Negotiable  
 Lease Price - Negotiable  
 Available Purchase or Lease Date - Immediately

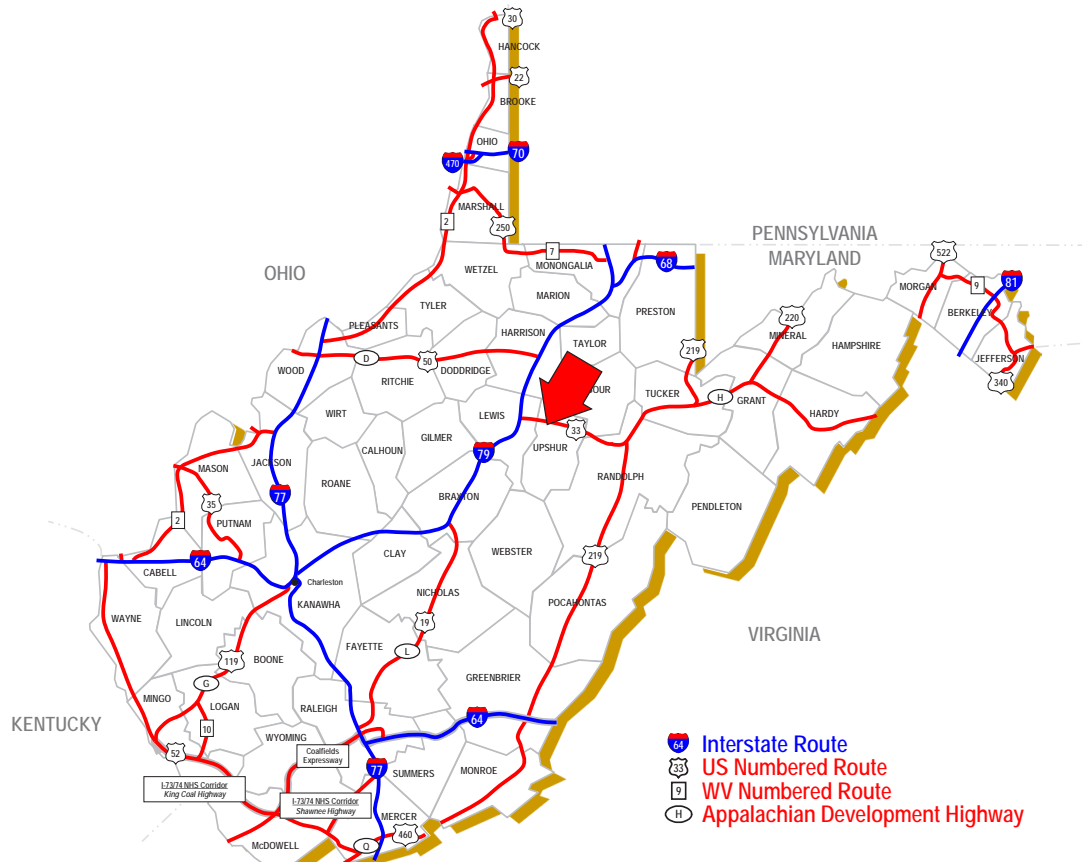
#### FOR FURTHER INFORMATION CONTACT

Stephen E. Foster, Executive Director  
 Upshur County Development Authority  
 99 Edmiston Way, Suite 102  
 Buckhannon, WV 26201  
 Phone: (304) 472-1757  
 Fax: (304) 472-4998  
 Email: info@upshurda.com  
 Website: www.upshurda.com

**Disclaimer:** The information contained herein is from multiple sources and is provided as a convenient guide. It is deemed reliable, but is not guaranteed, and is subject to change without notice. It is your responsibility to independently confirm its accuracy and completeness.



SCALE: 1" = 1000'



BUCKHANNON, WEST VIRGINIA