



NorthpointeBusinessandIndustryPark

Property Report (Northpointe Business & Industry Park)



Property Details

Site/Building Name	Northpointe Business & Industry Park
Street Address	Northpointe Drive
City	Hazelton
County	Preston County
Zip Code	26525
Type of space	Industrial, Business Park
Min Size	4.44 acres
Max Size	22.61 acres
Last Updated	4/27/2016

Economic Development Contact

Company	West Virginia Development Office
Contact Name	Matt Borrer
State	West Virginia
Cell	304-380-2413
Email	Matthew.K.Borrer@wv.gov

Availability

For Sale	Yes
Sale Terms	Sale Price: Lot 1: \$399,000 total price; Lots 2 & 3: \$299,000 total price; Lot 10: \$25,000 per acre. Sale Terms are negotiable.
For Lease	Yes
Lease Rate	\$6.00/sf
Lease Terms	Lease Rate is for Lots 1 & 10 only. Lease Terms are negotiable
Date Property Available	Immediately

Site Details

Total Acres	64.07 / 22.61 Available acres
Maximum Contiguous Acres Available for Development	10.72 acres
Divisible	Yes
Divisible Acreage Range	Lot 1: 4.44, Lots 2 & 3: 10.72, Lot 10: 7.45
Located in City Limits	No
Zoning	Restrictive covenants
Tax Map District	Grant
Tax Map and Parcel	Map 23, Parcel 10

Transportation

Nearest Airport	Morgantown Municipal Airport
Distance to Airport	24 miles
Nearest Interstate	I-68
Distance to Interstate	0.57 miles
Interstate Exit	29

Utilities

Electric Service Provider	Mon Power
Voltage	12 kV
Phase	3
Natural Gas Provider	PS Energy
Natural Gas Line Size	2 in
Water Service Provider	PSD IV
Water Line Size	8 in
Static Water Pressure	190 lbs.
Residual Water Pressure	Depends upon flows required
Sewer Provider	Preston County Sewer PSD
Broadband	Yes
Telecom Provider	Frontier
Switching	Digital

Other

Development Council Region	6
Topo Quadrangle	Brandonville

Property Contact

Company	Preston County Economic Development Authority
Name	Roberta Baylor, PCED, Executive Director
Phone	(304) 329-2299
Fax	(304) 329-6215
Email	robertabaylor@hotmail.com
Website	http://www.prestonwv.com
Address	330 East Main Street, Suite 100
City	Kingwood
State	WV
Zip	26537

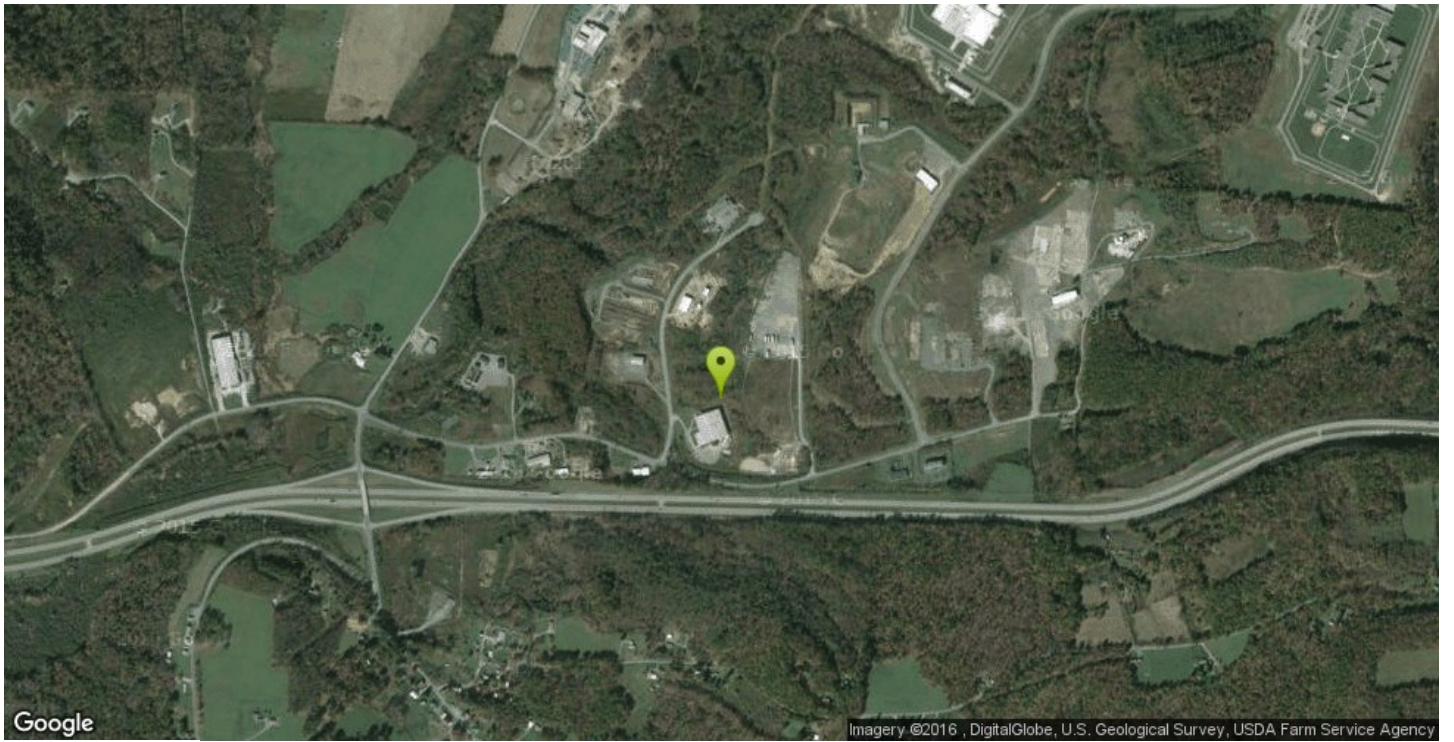
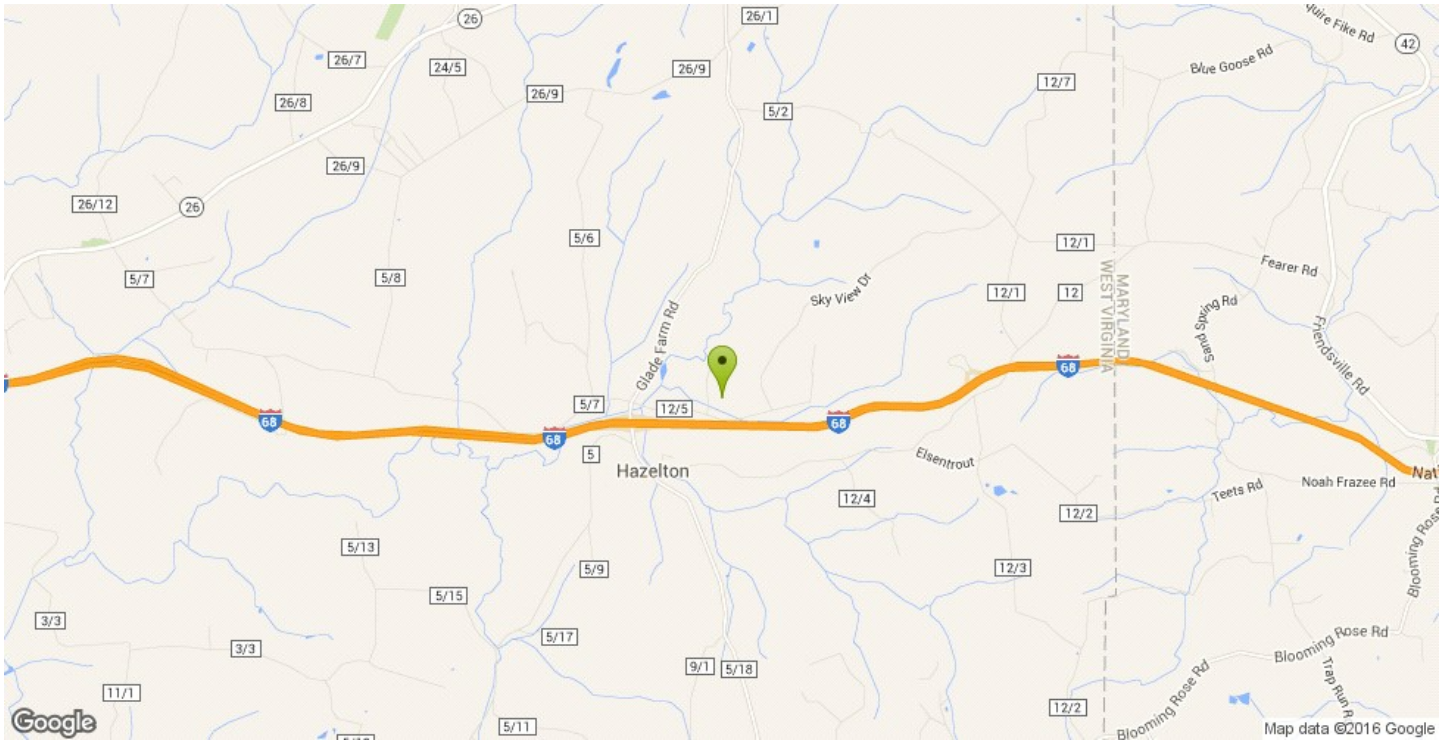
Description

Lot 1 has a 6,608 sq. ft. building located on it, 5,392 sf of manufacturing space and 1,216 sf of office space, the building is completely finished.
Premier site location, great interstate access and visibility, priced well below

Attachments

[Northpointe Business and Industry Park Lot Layout Revised 3-16-2016](#)

Northpointe Drive



Northpointe Drive



Northpointe Business and Industry Park

