



WEST VIRGINIA DEVELOPMENT OFFICE
1900 Kanawha Boulevard East
Charleston, WV 25305-0311
Toll free: (800) 982-3386
Office: (304) 558-2234 • WVDO.org

AVAILABLE SPACE RECKART EQUIPMENT COMPANY BUILDING



BEVERLY, WEST VIRGINIA

LOCATION

Building Address - US Route 219 South
Beverly, WV 26253
Located in City Limits - No
Zoning - None
County - Randolph
Located in Business/Industrial Park - No
Can the Building be Multi-Tenant - Yes
Flood Hazard Zone - Location is not within any FEMA Zone

SIZE

Total Sq. Ft. - 99,120
Total Available Sq. Ft. - 99,120
Total Leased Sq. Ft. - 0
Acres - 27.43
Available Manufacturing/Warehouse Sq. Ft. - 84,756
Available Office Sq. Ft. - 14,364

CEILING HEIGHT

Manufacturing/Warehouse Space - 17'-10"

SPECIFICATIONS

Can the Building be Expanded - Yes
Number of Additional Sq. Ft. Building can be Expanded - Negotiable
Is There Additional Land Available - No
Number of Additional Acres - N/A
Date of Construction - 1972

Dates of Expansion - Unknown
Date Vacated - March 2013
Floor Thickness and Composition - 6" reinforced concrete, 8" in back
Wall Composition - Metal panels
Wall Insulation - 2" metal panels
Roof Composition - Rubberized Membrane
Roof Insulation - Unknown
Column Spacing - 30' x 60'
Type of Sprinkler System - Wet system serves entire building
HVAC - Gas forced air space heaters
Type of Lighting in Manufacturing/Warehouse Space - Halogen
Number and Capacity of Overhead Cranes - Seven 5 ton
Number of Truck Docks - Three
Number and Size of Bay Doors - Two 15' x 14', one 15' x 16' and one 11' x 9'
Number of Parking Spaces - 100-120
Previous use of the Building - Sawmill fabrication

TRANSPORTATION

Interstate/4 Lane Highway - 10 miles to US Route 33 (Corridor H)
Commercial Airport - 70 miles to North Central West Virginia Airport
Railroad - West Virginia Central
Railroad Siding - None
Navigable Waterway - None
On-Site Barge Facility - None



UTILITIES

Electricity - Mon Power

Voltage - 277/480

Phase - 3

Gas - Mountaineer Gas Company

Size of Service Line - 3"

Gas Pressure - 45 psi

Water - Beverly PSD

Size of Service Line - 1 1/4"

Static Pressure -

Residual Pressure -

Excess Capacity of Treatment Plant (GPD) -

Sewer - Beverly PSD

Size of Service Line - 6"

Excess Capacity of Treatment Plant (GPD) -

Telephone Supplier - Suddenlink/Frontier

Switching - Digital

Broadband Service - Yes

SALE/LEASE

Sale Price - \$2.8 million

Sale Terms - As is

Lease Price - Negotiable based on market rates and terms of lease

Lease Terms - Negotiable

Available Purchase or Lease Date - Immediately

FOR FURTHER INFORMATION CONTACT

Hoy Ferguson

Davis Trust Company

PO Box 1429, 227 Davis Avenue

Elkins, WV 26241

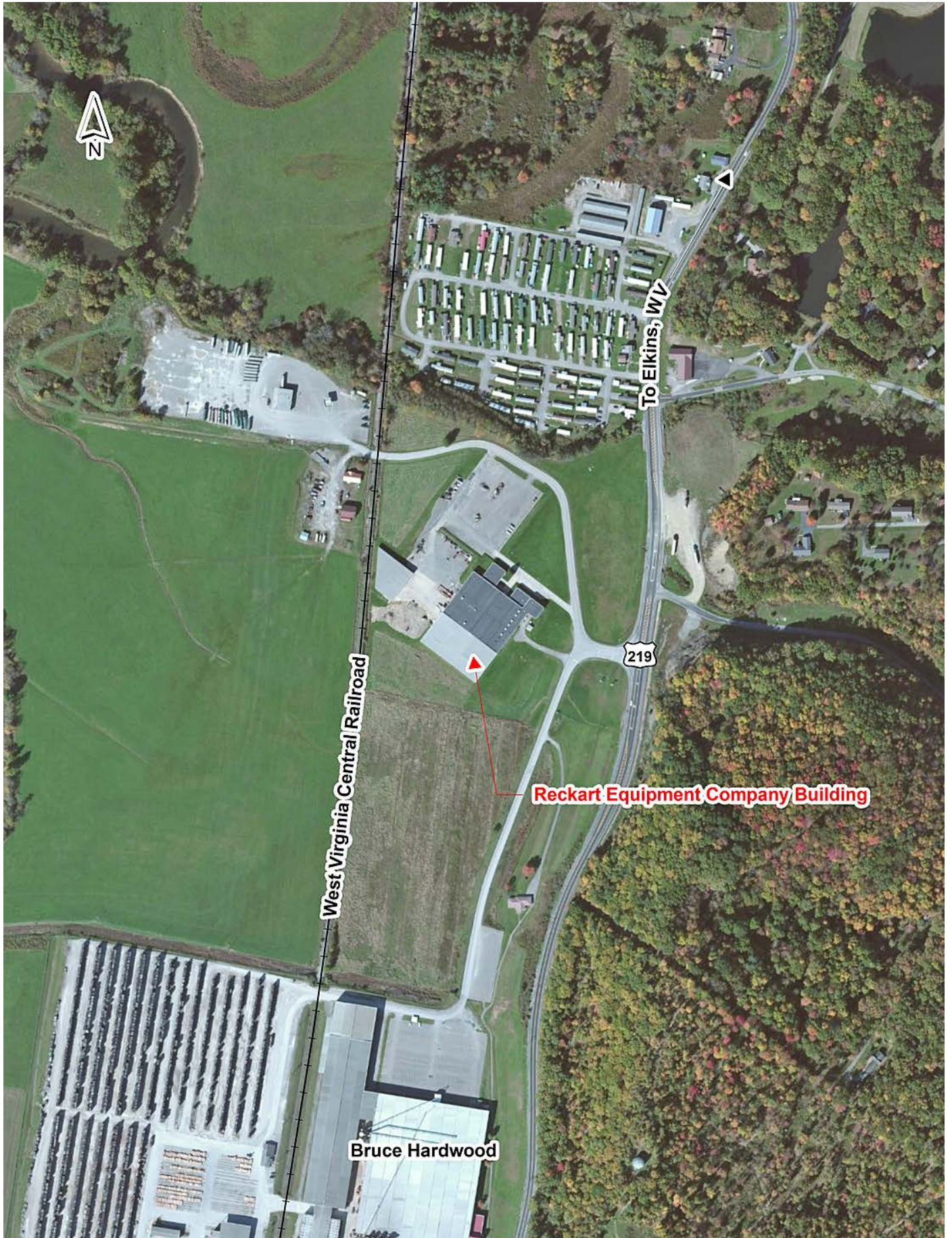
Phone: (304) 636-0991 Ext. 276

Fax: (304) 636-8428

Email: hferguson@davistrust.com

Website: www.davistrust.com

Disclaimer: The information contained herein is from multiple sources and is provided as a convenient guide. It is deemed reliable, but is not guaranteed, and is subject to change without notice. It is your responsibility to independently confirm its accuracy and completeness.



BUILDING LOCATION NEAR BEVERLY, WEST VIRGINIA



PAINT BOOTH AND WASH BAY BUILDING



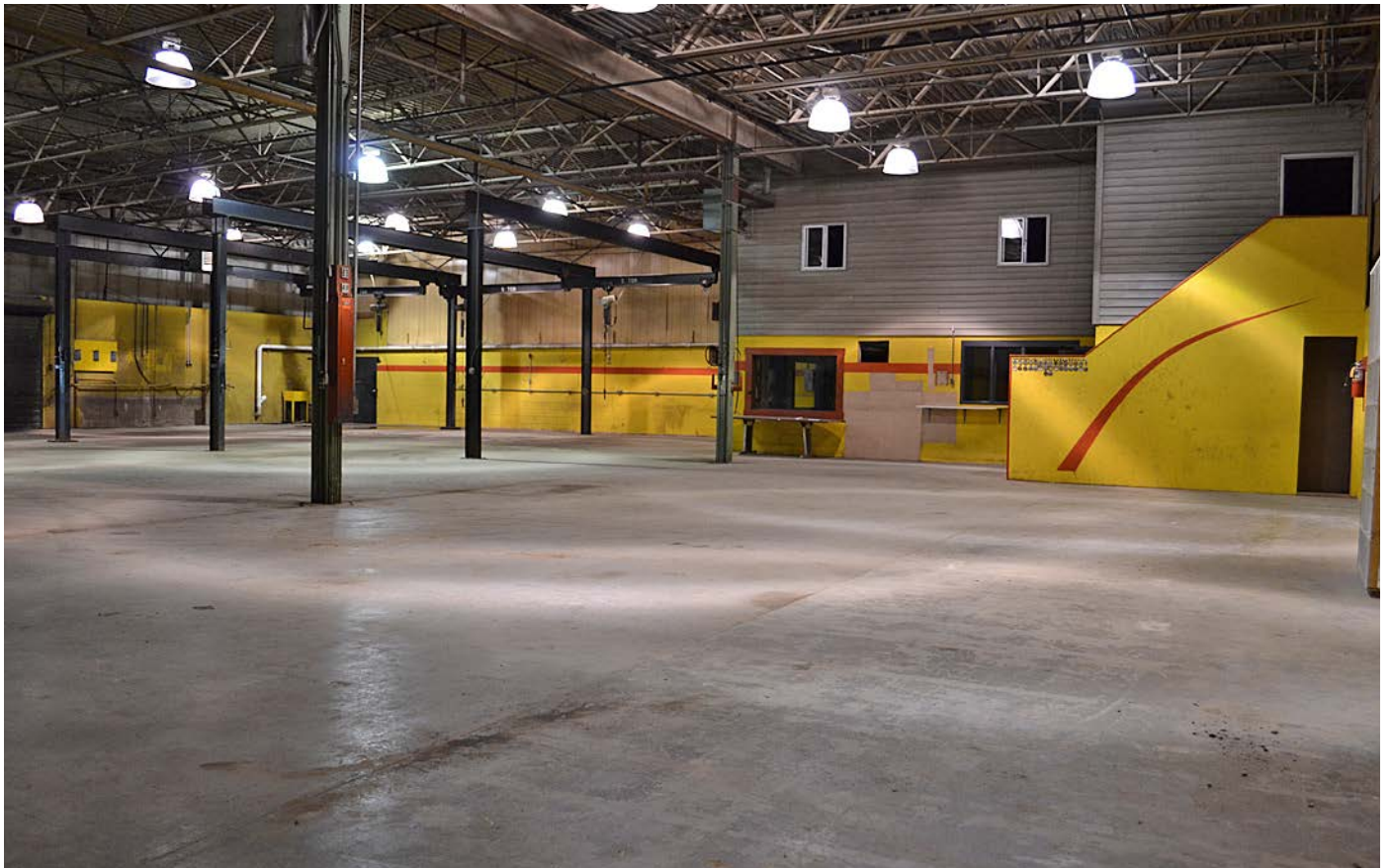
WAREHOUSE PARTS ROOM



WAREHOUSE PARTS ROOM



WAREHOUSE PARTS ROOM



MECHANIC SHOP



MECHANIC SHOP



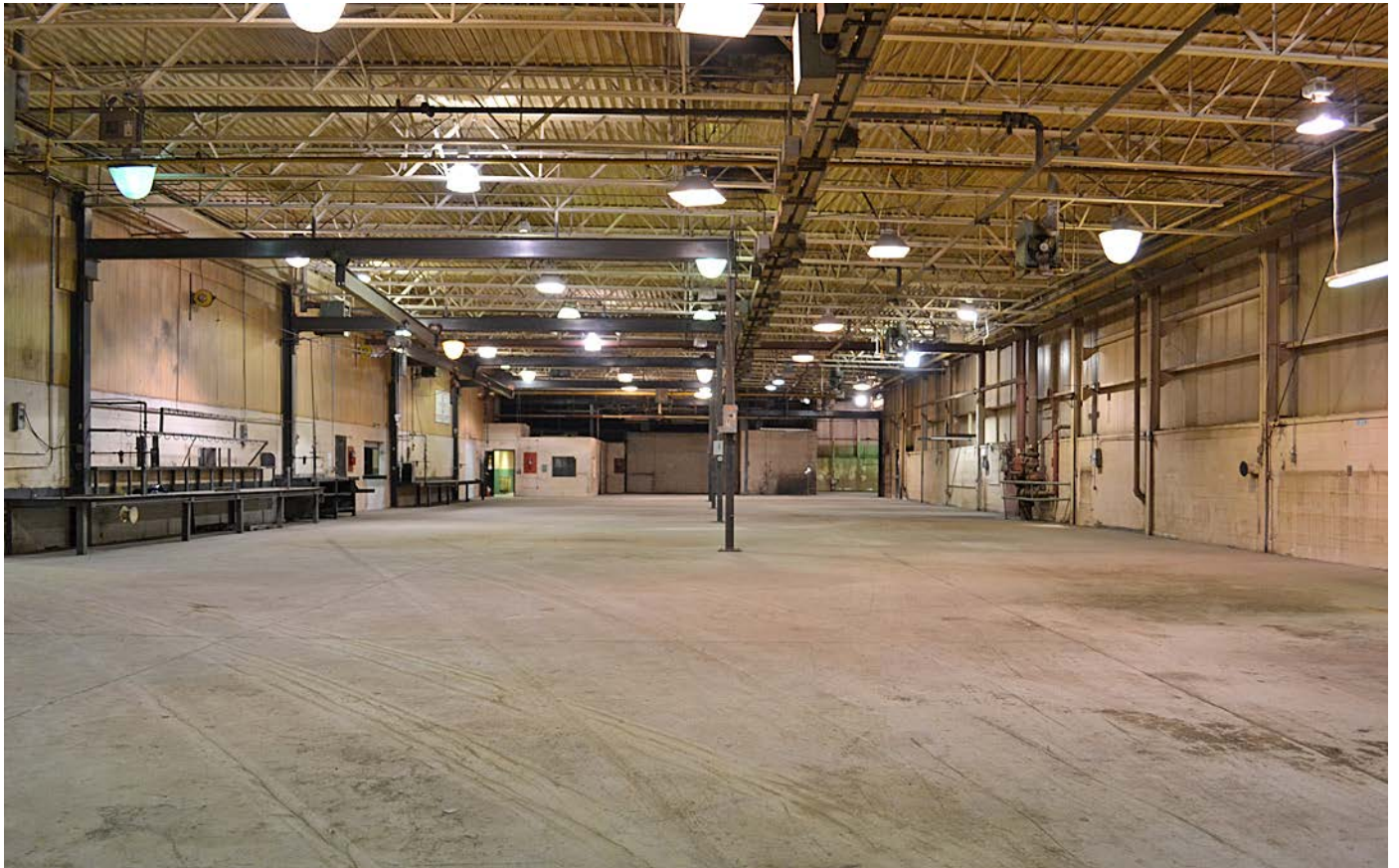
MECHANIC SHOP OFFICE SPACE



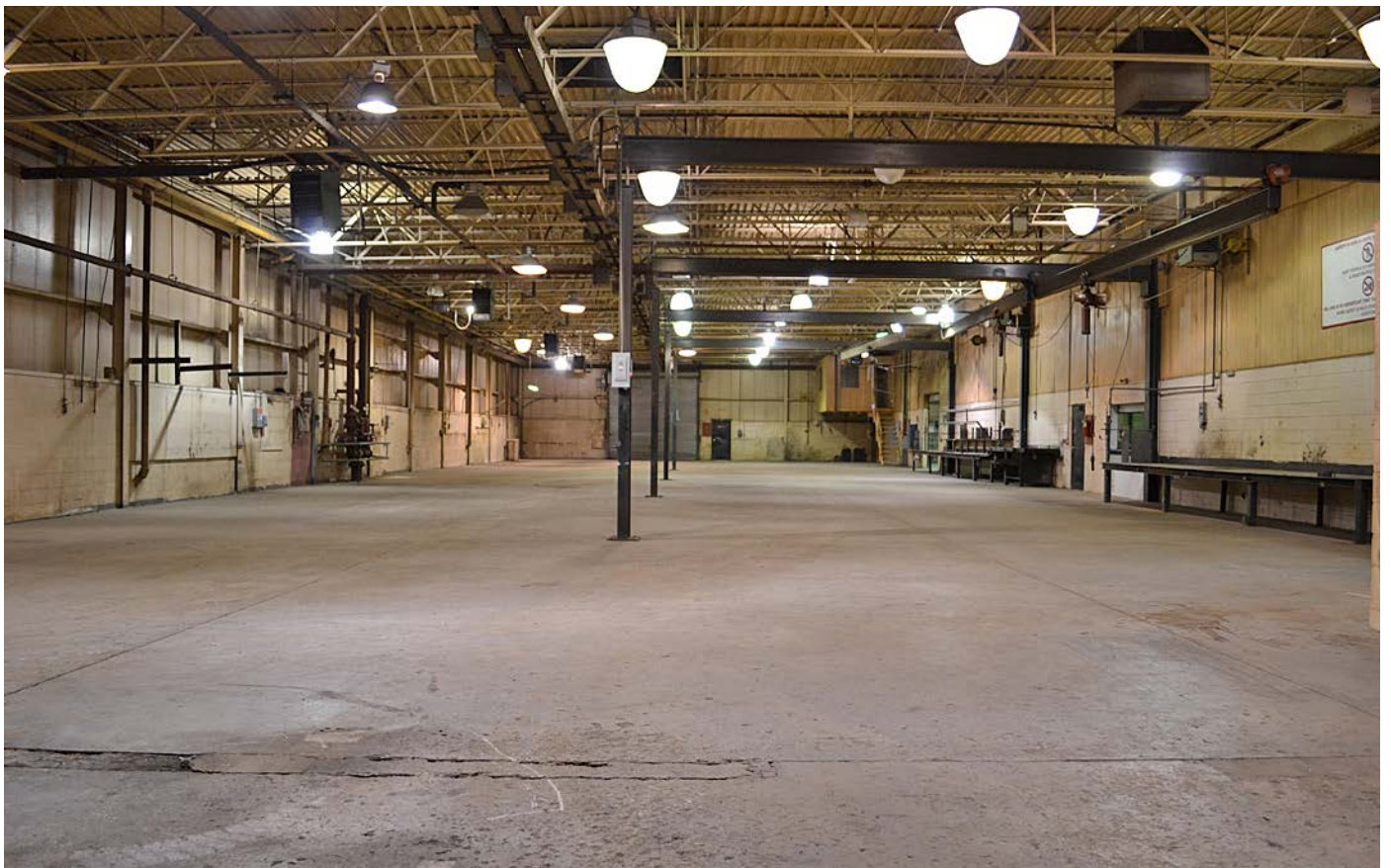
MECHANIC SHOP OFFICE SPACE



MECHANIC SHOP OFFICE SPACE



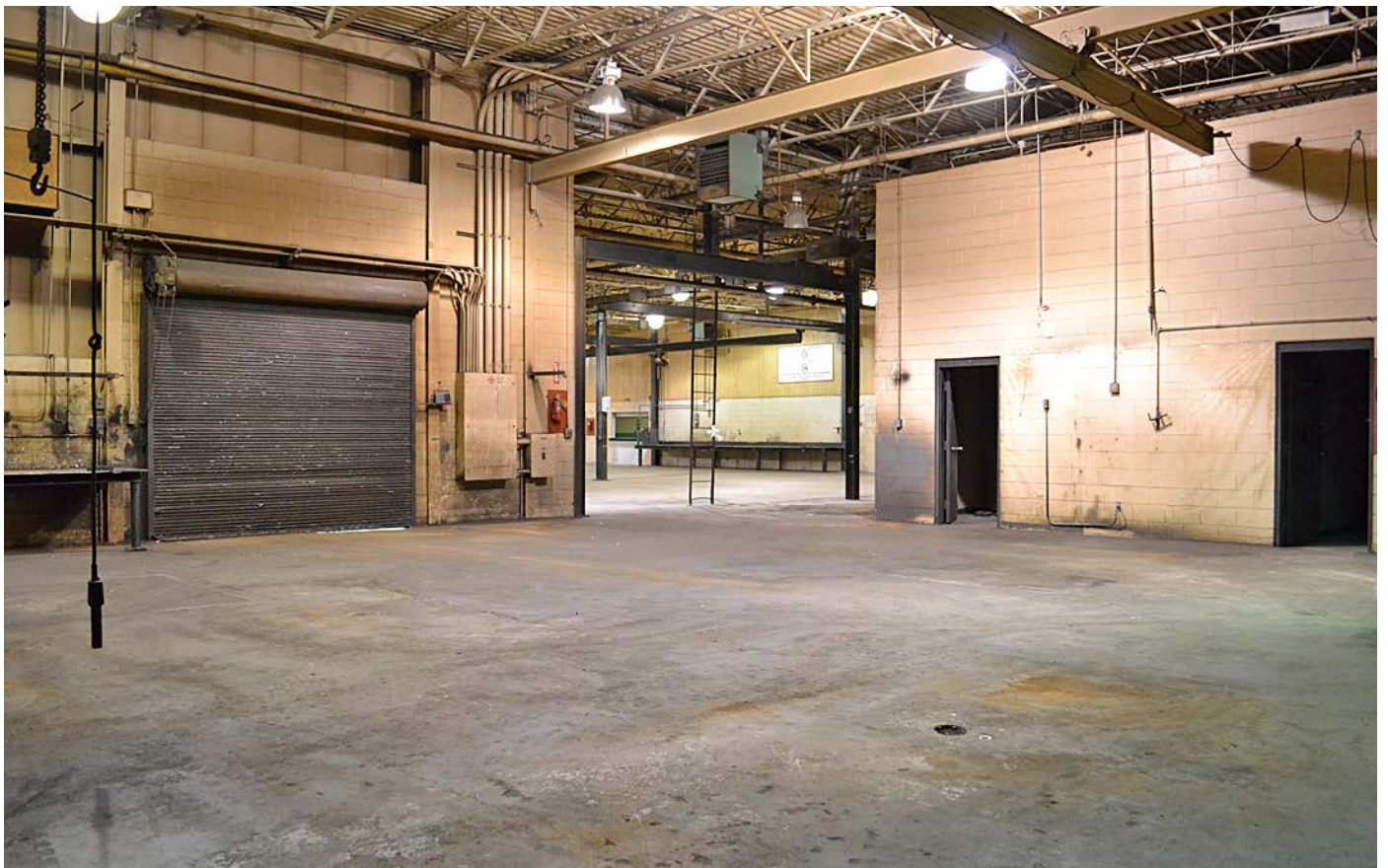
FABRICATION SHOP



FABRICATION SHOP



MACHINE SHOP



MACHINE SHOP



MAIN CORRIDOR, ACCESS TO OFFICE OR INDUSTRIAL SPACES



OFFICE CORRIDOR



RECEPTION/ACCOUNTING OFFICE



OFFICE SPACE